

Chelsea® 238 Series

Air shifted Powershift P.T.O. for Mechanical Transmissions



Overview:

In the past when you wanted to mount a Chelsea Powershift (Air) Power Take-Off (P.T.O.) to an eight bolt opening on a manual transmission, you have had to use our 236 Series with an adapter. Now Chelsea has eliminated the need for the use of an adapter in these applications with the release of the 238 Series P.T.O.

The 238 Series now gives you the ability to mount directly to the 8-Bolt openings just as you have done for years with the 489 Series. Using the same popular design as our 236 Series, the 238 Series will become standard for applications requiring an Air Shifted 8 Bolt Powershift P.T.O. Coverage will be on transmissions (Fuller, Mack, Spicer/TTC, Chelsea).

- LP Gas Trucks
- Water Trucks
- Fire and Rescue

Contact Information:

Parker Hannifin Corporation
Chelsea Products Division
8225 Hacks Cross Road
Olive Branch, MS 38654 USA

**Phone: 1-888-PH4-TRUK
(1-888-744-8785)**

**Fax: 1-662-895-1069
chelseacustserv@parker.com**

www.parker.com/chelsea



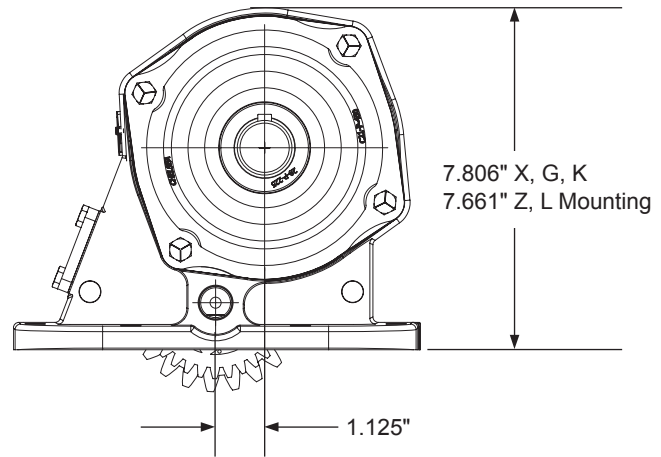
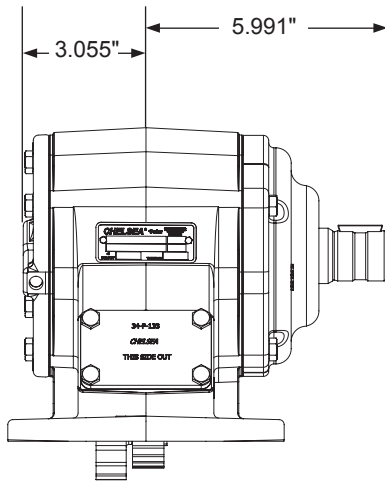
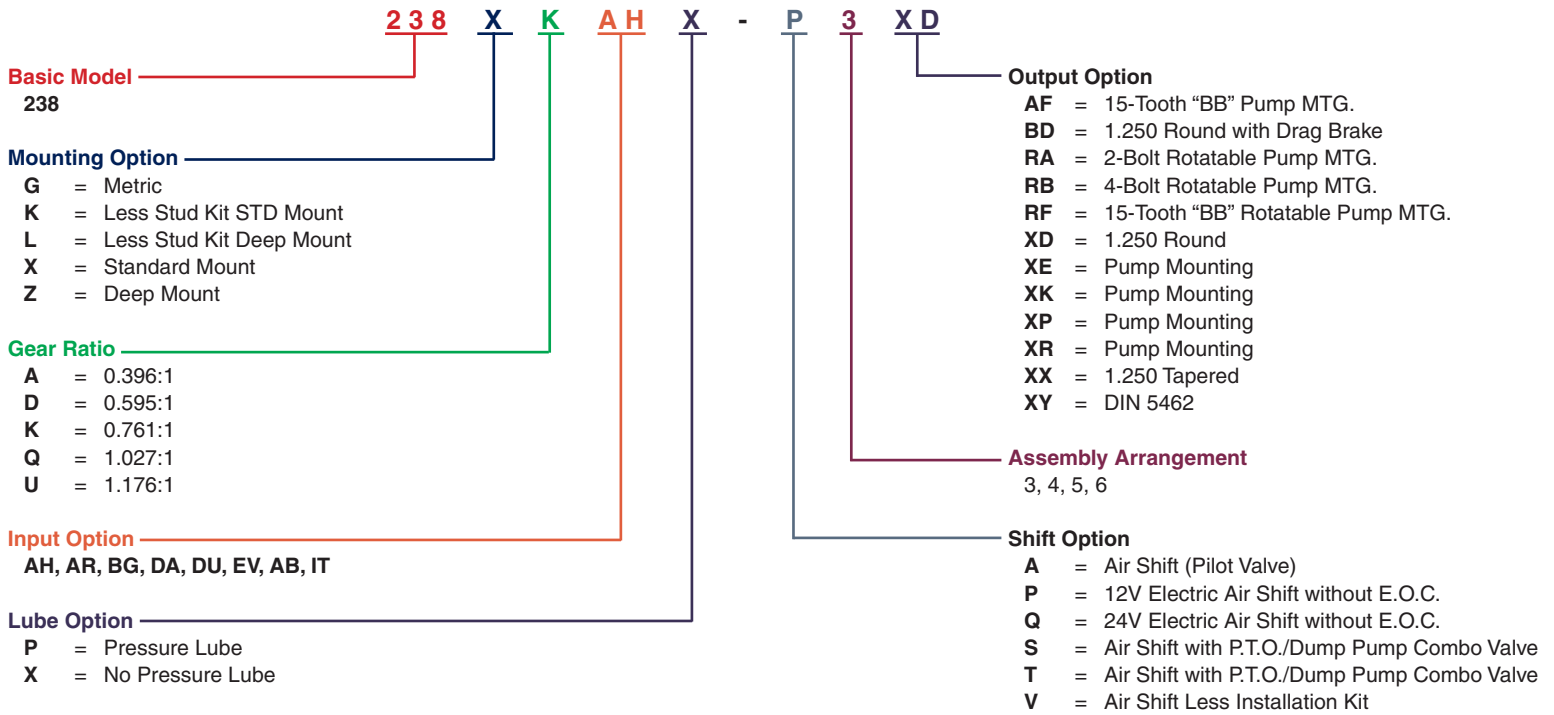
Product Features and Benefits:

- **“Slip” Fit Idler Pin** – Ease of Servicing
- **Comes as a “KIT” P.T.O.** Same input gears as 236 & 442 Series
- **“Inspection” Cover** – Set backlash accurately
- **4 Output Speed Ratios** – Wide coverage for your applications
- **12 Output Options** – Large coverage for your tough applications
- **5 Mounting Options** – Flexibility of Inventory & Applications
- **Up to 250 Lbs. ft. of Torque** – Allows coverage for most applications
- **Shaft Brake Option (“BD”) patent # 7159701** – Industry setting standard for product pump applications



ENGINEERING YOUR SUCCESS.

238 SERIES POWER TAKE-OFF SPECIFICATIONS AND TECHNICAL DATA



Specifications Chart

	238*A, D, K & Q	238*U
Standard Output Shaft Size	1-1/4" Round w/key	
Intermittent Torque Rating (Lbs. ft.)	250	225
Intermittent Torque Rating (N.m.)	339	305
Horsepower Rating for Intermittent Service		
At 500 R.P.M. of Output Shaft (HP)	24	21
At 1000 R.P.M. of Output Shaft (HP)	48	43
At 500 R.P.M. of Output Shaft (Kw)	18	16
At 1000 R.P.M. of Output Shaft (Kw)	36	32
Approximate Weight:	49 lbs. [22 kg]	